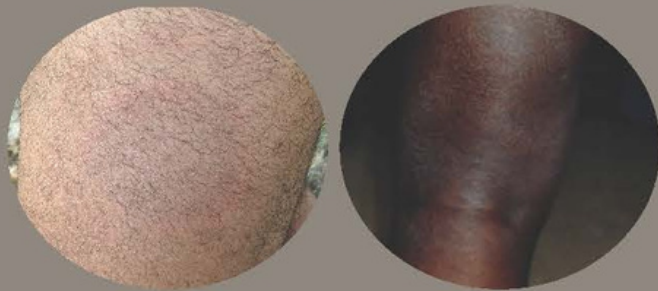
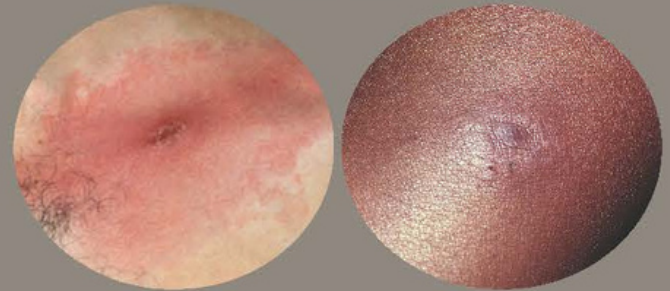


The Many Forms of Lyme Disease Rashes (Erythema Migrans)

Faint colors and borders



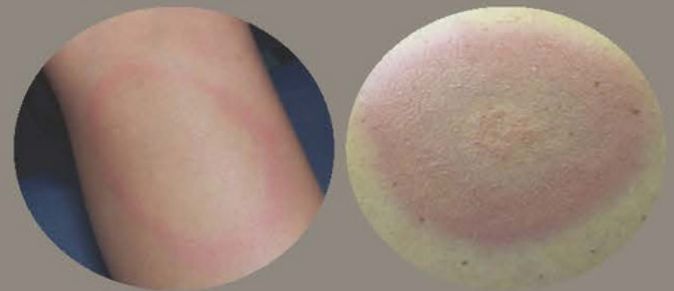
Crusted centers



More than one rash



Different shapes and colors



Appearing anywhere on the body



Most people with Lyme disease develop an erythema migrans rash at the site of the tick bite. The rash usually expands slowly over several days reaching up to 12 inches or more (30 cm) across. **However, not all rashes are a sign of Lyme disease.** The redness in the picture to the left is caused by irritation to the tick bite — not a tickborne infection.

Photo credits (from top, left to right): 1. Centers for Disease Control and Prevention; 2. Courtesy of Dr. Gary Wormser, New York Medical College; 3. ©DermAtlas, Bernard Cohen. Used with permission; 4. Reprinted from Blhate C, Shwartz RA. Lyme disease: Part 1. Advances and Perspectives. Am Acad Dermatol 2011;64:619-36, with permission from Elsevier; 5. ©DermAtlas, Bernard Cohen. Used with permission; 6. Courtesy of Vermont Department of Health; 7. ©DermAtlas, Taryn Holman. Used with permission; 8. ©DermAtlas, Yevgeniy Balagula. Used with permission; 9. Courtesy of New York State Department of Health; 10. ©DermAtlas, Robin Stevenson. Used with permission; 11. ©DermAtlas, Alison Young. Used with permission; 12. Centers for Disease Control and Prevention, <http://phil.cdc.gov/phil>



Learn more about Lyme disease symptoms at
www.cdc.gov/lyme/signs_symptoms

